

# Actimove®

Rhizo Forte



- Functional stabilisation of the CMC and MCP joints of the thumb
- Low-profile design and smooth edges for high wearing comfort
- Mouldable aluminium core for a customisable fit

**Effective stabilisation  
for maximum functionality**

Feel good. Move better.

# Actimove® Rhizo Forte – Functional Thumb, Active Life

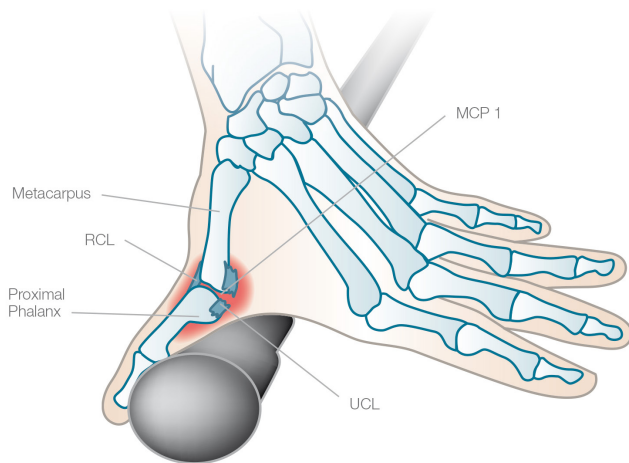
The hand and its digits play a pivotal role in everyday life. Holding a glass, opening a jar or picking up small objects are actions humans perform countless times every day.

The ability of the thumb to oppose the fingers is often taken for granted. When the thumb is injured due to an acute injury or a chronic illness, the patient's life can be severely impacted due to pain and loss of function.

Common injuries and illnesses to the thumb include:

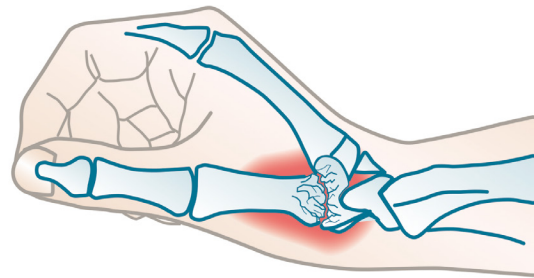
## Acute injury

Caused by trauma



## Chronic disorder

Caused by degenerative diseases



The objective of any treatment is to get patients back to using their hand and back to their normal daily life.

The 'one of a kind' **Actimove Rhizo Forte** brace is designed to restrict thumb movement whilst maintaining the daily functionality of the hand. The Red Dot® award winning design ensures the immobilisation of the CMC and MCP joints without restricting the movement of the wrist and the other four fingers.

# Actimove® Rhizo Forte – Functional Thumb, Active Life



reddot award 2014  
winner

Low profile design with smooth  
edges for high wearing comfort

• Closures which allow  
• the brace to be easily  
• secured with one hand

Effectively restricts thumb  
movement, while leaving  
the four fingers and the  
wrist to move freely

.....  
Made from materials  
that are dirt and water  
repellent for ease of  
cleaning

.....  
Mouldable aluminium  
core is easily adjustable  
for a perfect fit

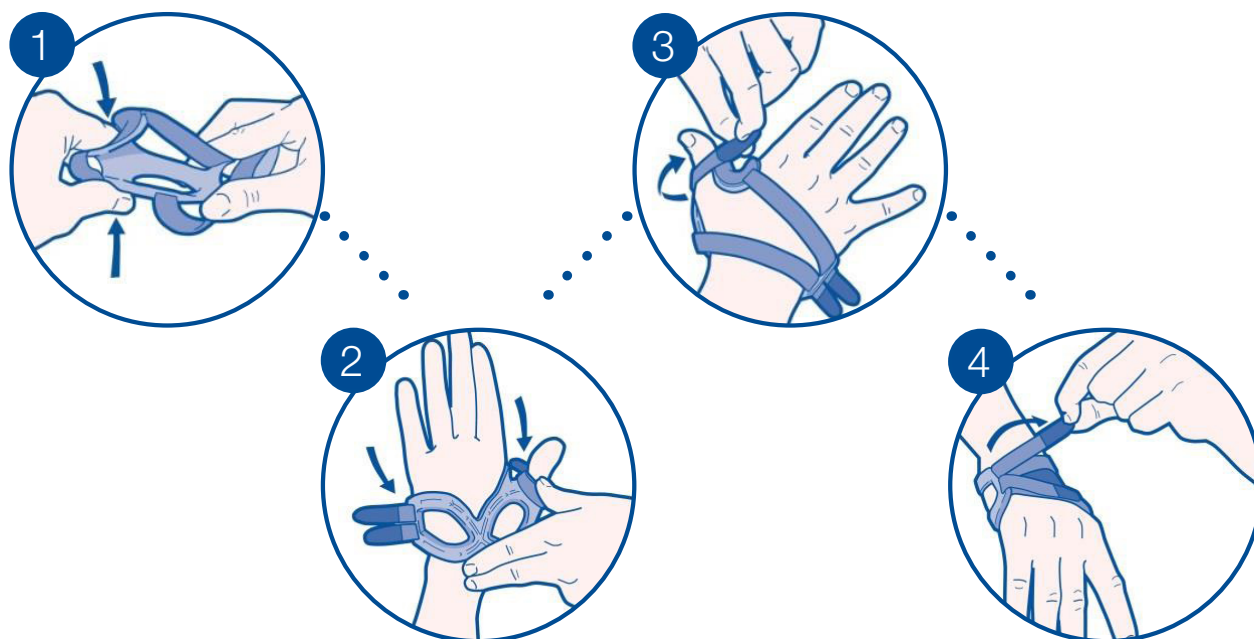
## Indications

- Painful conditions and irritations of the thumb joints (e.g. Osteoarthritis),
- Rheumatoid Arthritis of the thumb,
- Ulnar Collateral Ligament injuries of the MCP1 Joint (e.g. Skier's thumb),
- Soft tissue injuries (e.g. sprains),
- Ligament instability,
- Post-operative immobilisation.

# Actimove® Rhizo Forte – Functional Thumb, Active Life

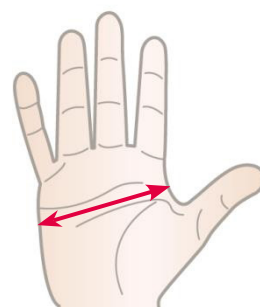


## Basic Fitting Instructions



## Ordering Information

Actimove Rhizo Forte			
	Size	Left	Right
S	4.5cm – 5.4cm	76238-01	76238-00
M	5.5cm – 6.3cm	76238-03	76238-02
L	6.4cm – 7.3cm	76238-05	76238-04



### DISTRIBUTED BY:

**Smith & Nephew Pty Ltd** Healthcare Division

#### Australia

T 61 3 8540 6777 F 61 3 9544 5086  
www.smith-nephew.com/australia

#### Customer Service

T 13 13 60 F 1800 671 000

#### New Zealand

T 64 9 828 4059 F 64 9 820 2867  
www.smith-nephew.com/new-zealand

#### Customer Service

T 0800 807 663 F 0800 263 222

**BSN** medical

©Registered Trademark  
SN12153 (10/15)