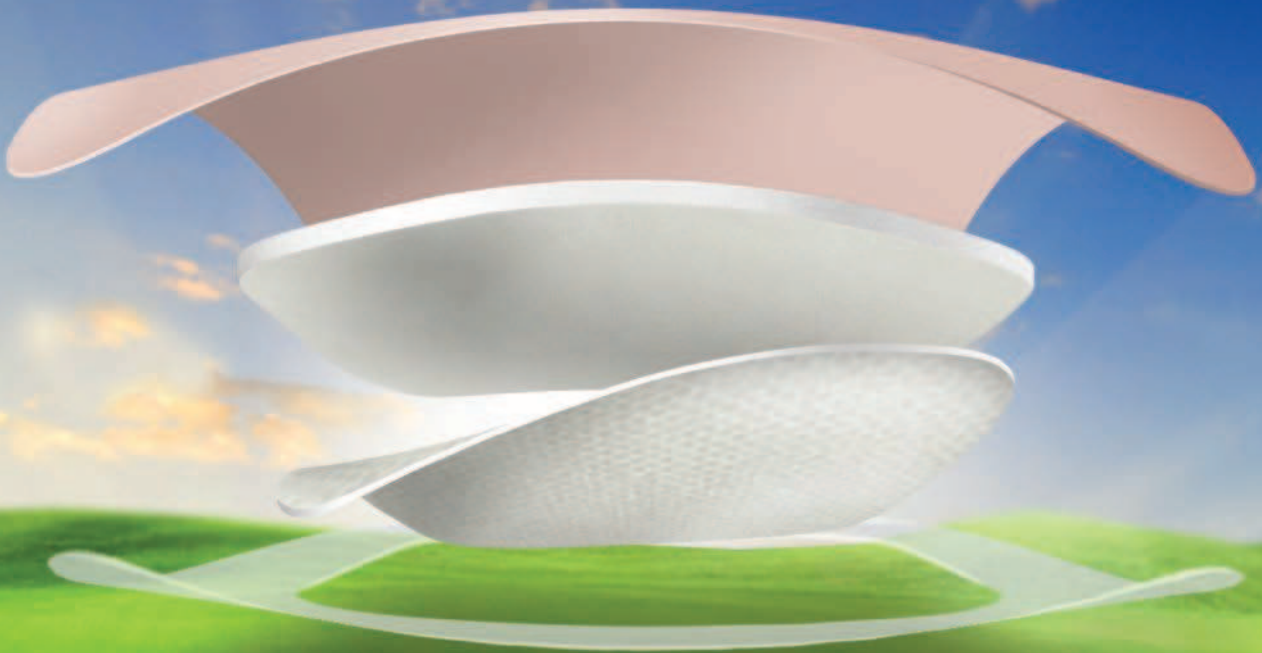


Everything you love about foam dressings *and more*



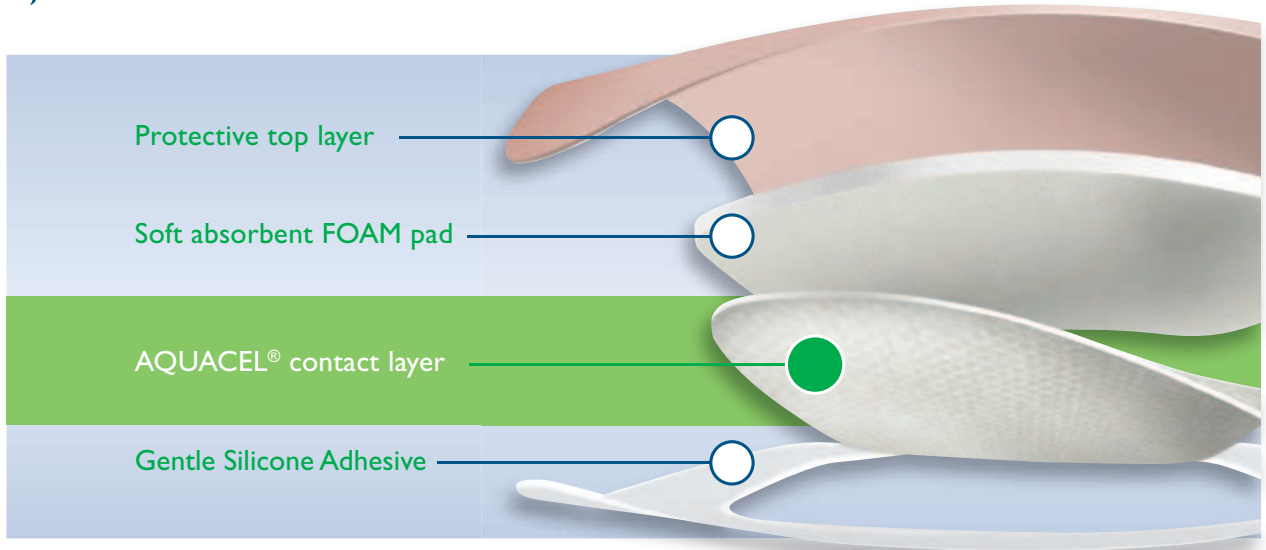
Introducing

NEW AQUACEL[®]
Foam



The **only** FOAM that has it all – comfort, simplicity
and the healing benefits of an AQUACEL[®] contact layer

Flexible, Soft and Gentle



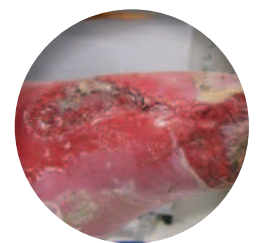
- Simple to use
- Easy to apply and remove¹
- Suitable for all exuding wounds
- Waterproof, viral & bacterial barrier^{2,a}



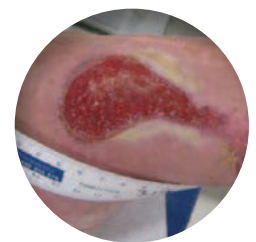
CUTTABLE

An ideal combination of AQUACEL[®] contact layer and a gentle silicone adhesive

- Reduces pain while in situ and upon removal¹
- Repositions without trauma¹
- Minimises patient anxiety about painful dressing changes³
- Adhesive does not stick to gloves or itself
- Healing benefits of an AQUACEL[®] contact layer



Before AQUACEL[®] Foam*

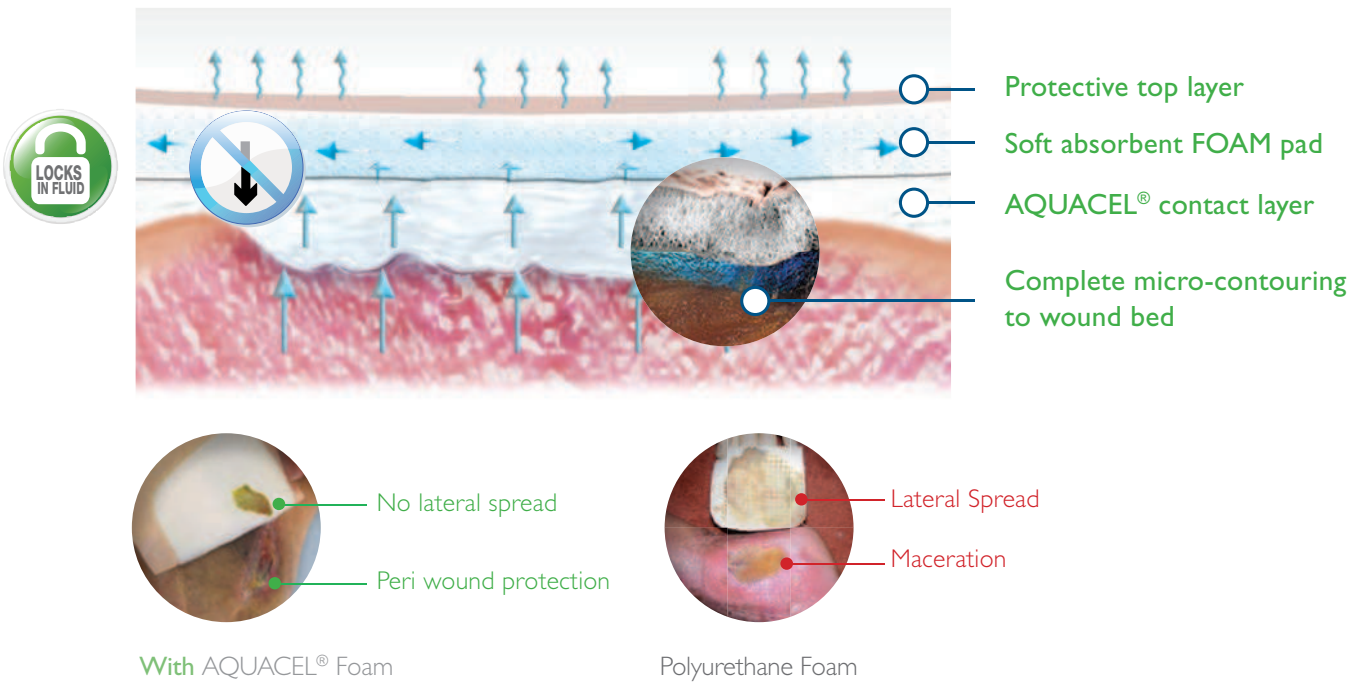


After AQUACEL[®] Foam*

* Images used with the kind permission of Rosalyn Thomas, Deputy Head of Podiatry, Diabetes Centre, Morriston Hospital Swansea. Note wound was managed post larval therapy with AQUACEL Extra and AQUACEL Foam dressing due to high exudate levels. Once exudate levels decreased and the wound became shallow AQUACEL Foam was continued as primary dressing.

Out foam dressings and more

Facilitates Healing: the **only** FOAM to vertically wick which minimises lateral spread of fluid, reducing risk of maceration^{a4-7}



The **only** FOAM that has it all – comfort, simplicity, and the healing benefits of an AQUACEL® contact layer

	AQUACEL® Foam Dressing	Mepilex™ Border Dressing	Allevyn™ Gentle Border	Biatain™ Silicone
Comparable total fluid handling ^{a8}	✓	✓	✓	✓
Gentle Adhesive for the skin ^{a9}	✓	✓	✓	✓
Adhesive not covering wound contact area	✓	-	-	✓
Observed complete micro-contouring to simulated wound bed ^{a10}	✓	-	-	-

^aAs demonstrated in vitro.